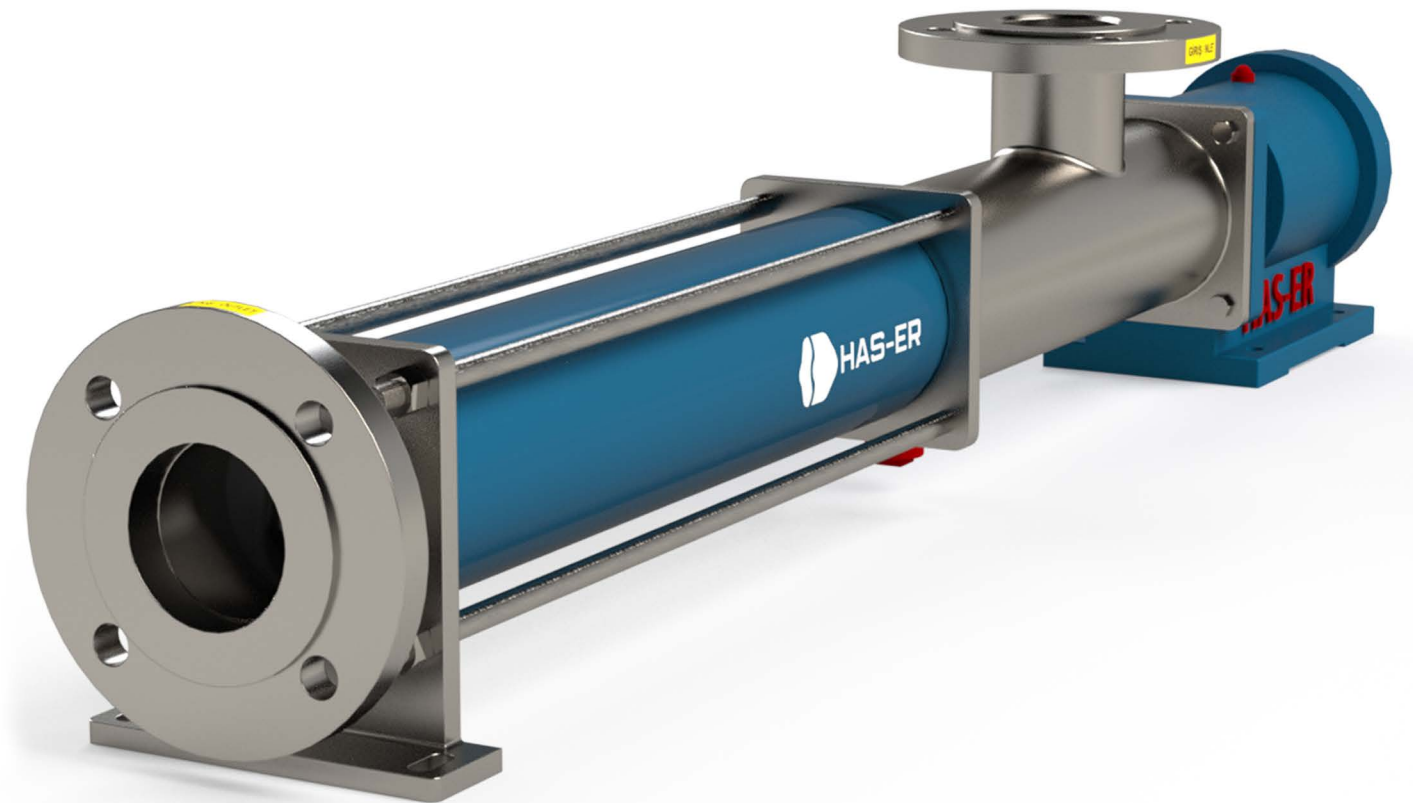
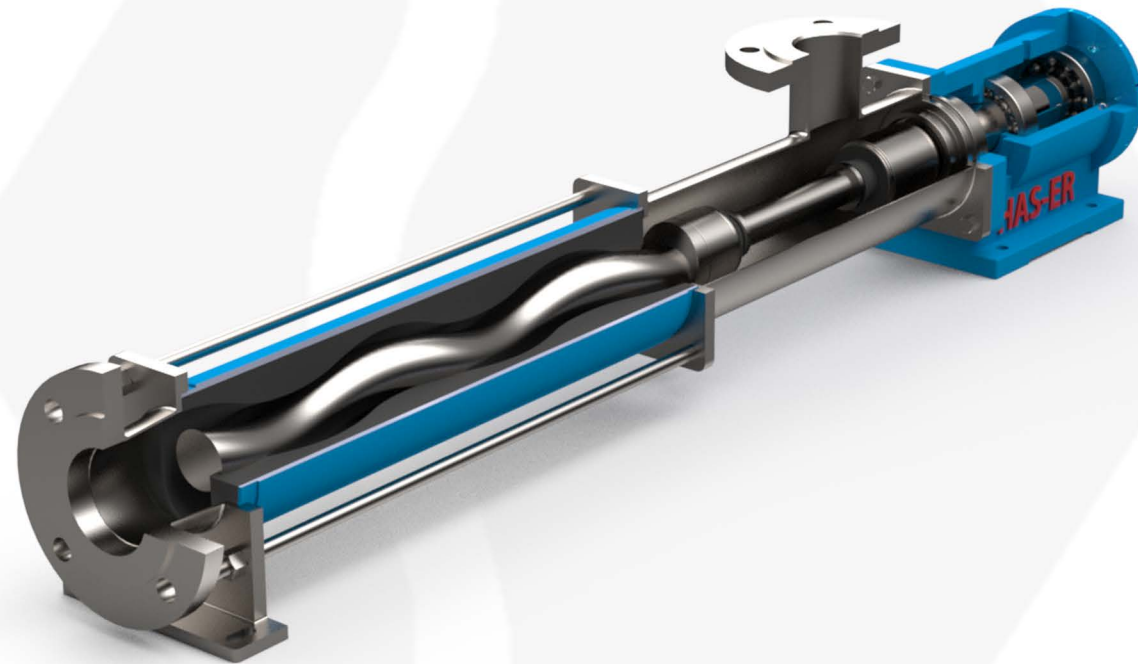




HAS-ER[®]
M O N O P U M P

Your Solution Partner in Fluid Transfer



Positive Displacement Pump

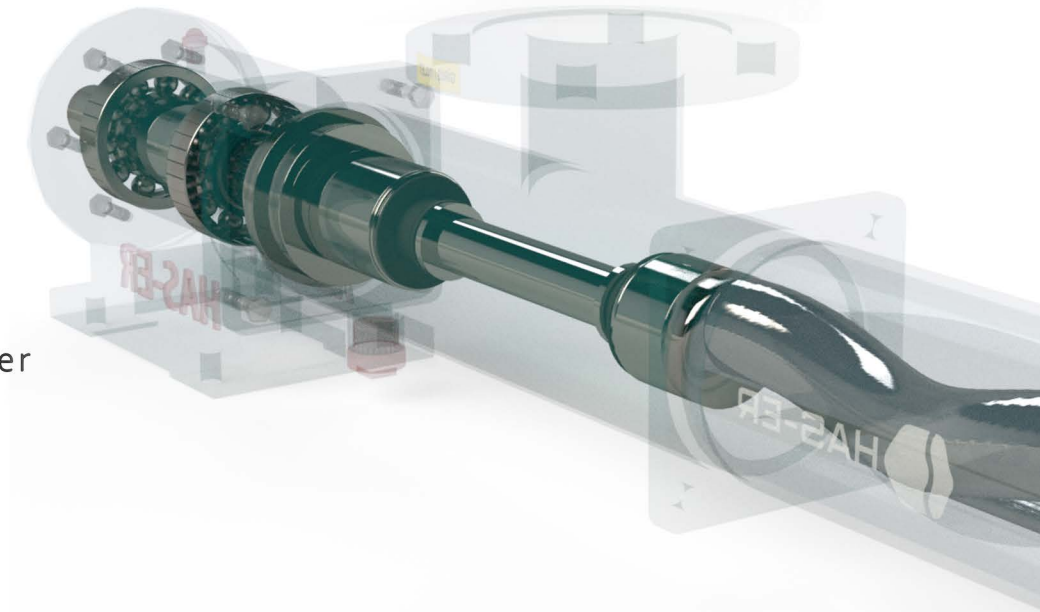


We, HAS-ER MONOPUMP, are proud to convey our professional manufacturing and international sales experience to you since 1991. We share with you all our experiences from the past to the present.

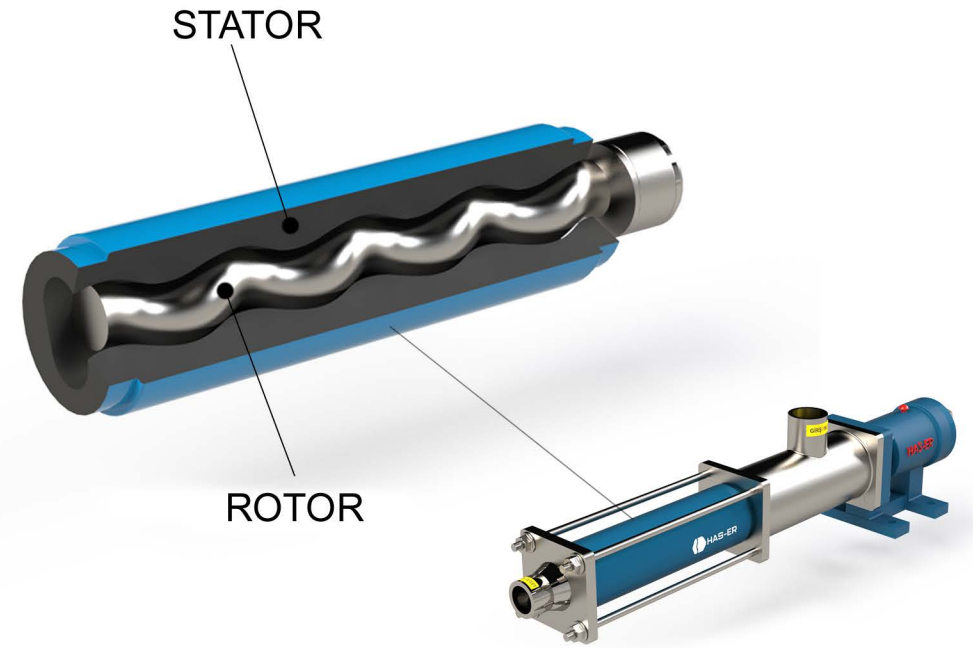
In today's conditions, in line with the changing needs of the customers in the ongoing times, we develop solutions that can respond to customers one-to-one by combining them with a unique service approach in the fastest way and quality.



It is known as mono pump (positive displacement pump), which does not spoil the properties of the product used for transferring fluid and semi-fluid products having high viscosity values.



It ensures the transfer of products without any problem like foaming, separation, and disintegration.



▷ Environmental Areas

- Wastewater and Sludge Treatment
- Dewatered Sludge Treatment
- Measurement of Chemical Additives
- Mineral processing
- Drilling muds

▷ Petroleum and Petrochemical

- Petrochemical Industry
- Gas Industry
- Probing Fluids
- Oil-Water Separation

▷ Food & Beverage

- Olive Oil Industry
- Milk and Dairy Industry
- Sugar Industry
- Drinks and Beer Industry
- Pet food
- Chocolate
- Sugar processing
- Fruit pulps and juices

▷ Cosmetics Pharmaceuticals

- Cosmetics Industry
- Pharmaceutical Industry
- Toothpaste
- Drugs
- Lotions & creams Toothpaste
- Soaps and detergents

▷ Working Principle of Mono Pumps

As stated in the cross-section above, With the action of the rotor shaft driven by the electric motor, the stator moves 360 degrees inside the slot. With the vacuum and compression occurring with this actuation, it enables the product in the pump to be transferred to the outlet pipeline in a compressed way by transporting it to the blanks. Since the stator has a rubber structure, it is resistant to stretching and deformation.



▷ Features of Mono Pumps

- Our firm produces pumps with different capacity and pressure options and with an operating range of 5 L / H - 200.000 L / H - 0/24 BAR.
- It can run at temperatures between - 30 c / + 250 c without any trouble.
- It runs silently and vibration free, it can also run smoothly in open or closed areas when suitable conditions are provided.
- It offers portable or fixed assembly with its different versions.
- It offers an advantage in challenging areas requiring installation thanks to its suction feature and it can work up to 8 meters.
- It offers precise product transfer and control over fluctuation.
- Working frequency can change in the range of 0-100 Hz. with and inverter.

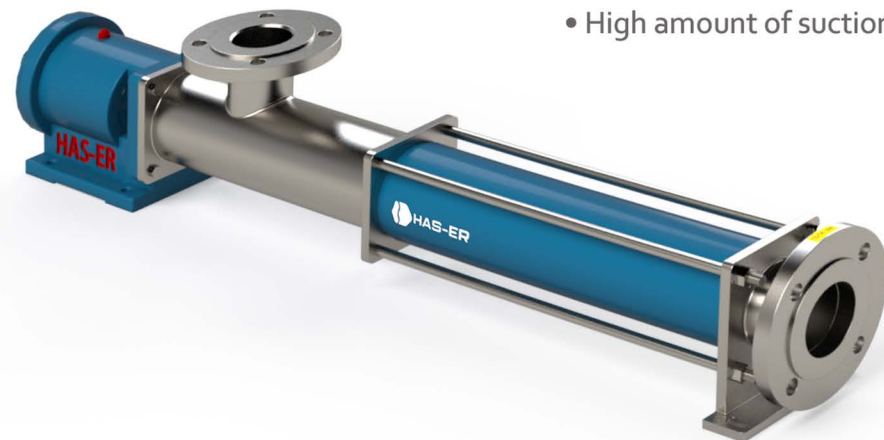


FL-SERIES

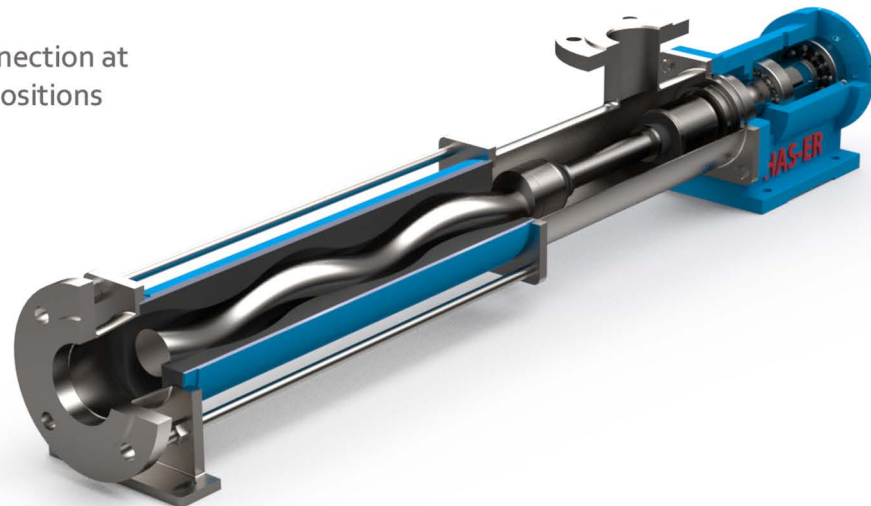
- **These pumps with flange connection** are mainly used in food and industrial areas, they are preferred where vacuum is required in fluid and semi-fluid products.

It has a solid, durable and very ergonomic design, and it is a solution partner for many sectors with the advantages it provides to its users.

- Different customized sealing solutions.
- Optional washing inlets and discharges.
- High amount of suction Max 8 meters



- High performance Maximum 200 m³ / h and 24 BAR model range
- Pump inlet option connection at Right - Left - Upright positions

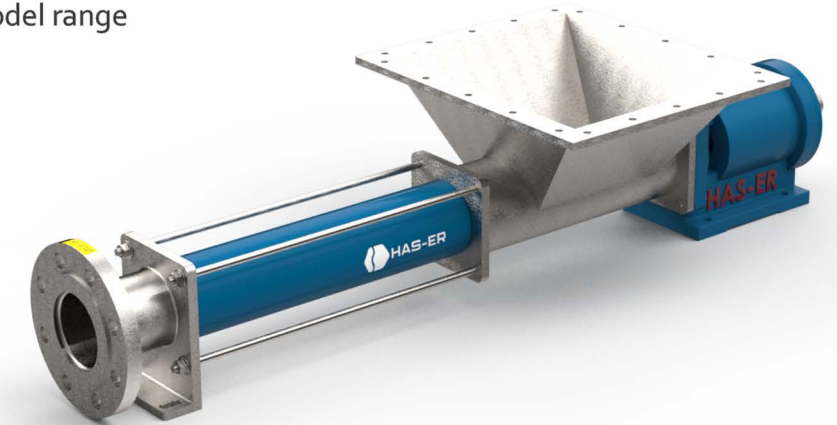


AH-SERIES

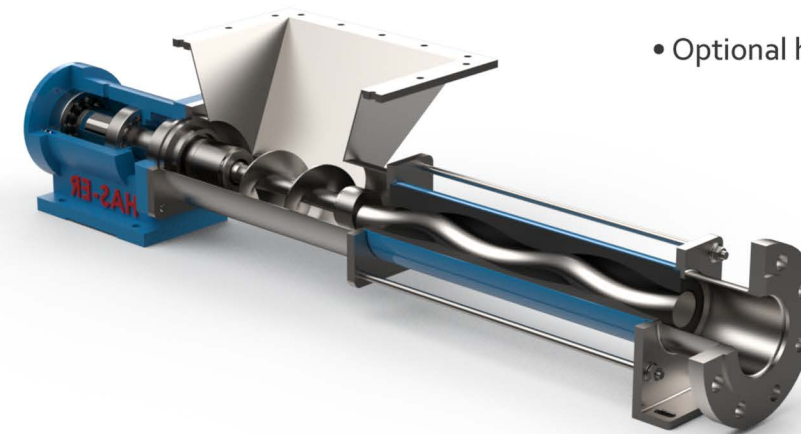
- **These pumps, which have an open mouth chamber inlet,** are preferred in food and industrial areas, these models are used in non-fluid products with very low fluidity and high viscosity.

It is a solution partner to many sectors with the advantages it provides to its users.

- Favorable for the transfer of high density products
- High performance Maximum 50 m³ / h and 18 BAR model range



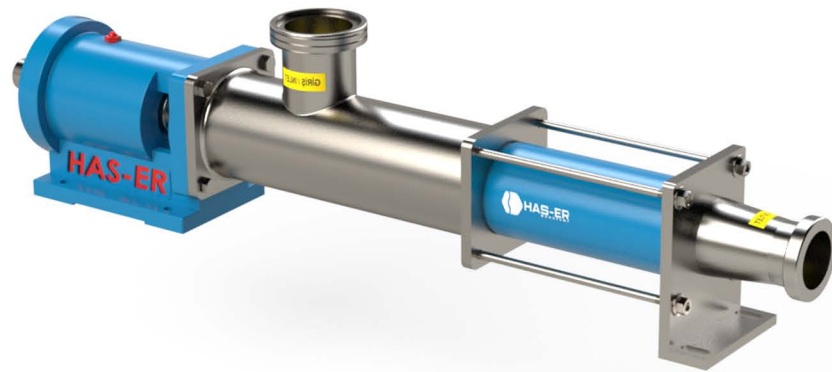
- Product storage with range hood
- Material durability with the feed screw
- Transfer of products having solid particles
- Optional heating and cooling jackets



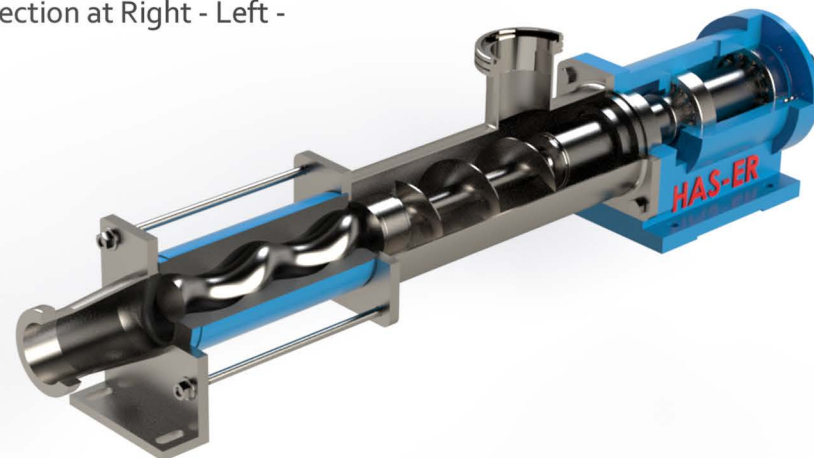
RK-SERIES

-These pumps with record connection are mainly preferred in dairy products, food and beverage sectors, fast connection is among the reasons for preference.

These are pumps designed for clean and healthy product transfer. It is a solution partner to many sectors with the advantages it provides to users.



- Suction Max 4 meters
- High performance Maximum 30 m³ / h and 24 BAR model range
- Fork joint option for hygienic pumps
- Pump inlet option connection at Right - Left - Upright positions



- Optional washing inlets and discharges
- Optional heating and cooling jackets (wall)

BAH-SERIES

- These pumps, which have a large open mouth chamber inlet, are preferred in industrial areas, these models are used in products with high dry matter content.

Generally, cakes, etc., which come out after the waste water sludge dewatering process. products are also preferred. It is a solution partner to many sectors with the advantages it provides to its users.

- Favorable for the transfer of high density products
- High performance Maximum 20 m³ / h and 6 BAR model range
- Product storage with range hood



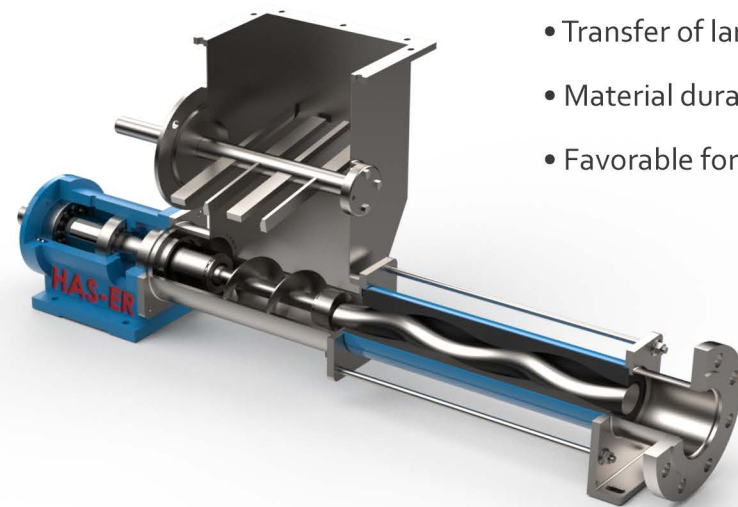
- Transfer of products with a high amount of dry matter
- Optional heating and cooling jackets
- Material durability with the long-lasting feed screw
- Bridging and gapless product transfer



KR-SERIES

- **These pumps with agitator and square inlet** are preferred in food and industrial areas, these models are used in non-fluid products with high viscosity. Having a mixer ensures that the product remains homogeneous for a long time in products that need to be broken down, dried and adhered, and facilitates the fluidity of the product during pump transfer.

The pump is controlled by a reducer and motor independent of the transfer speed, special felts are used for sealing. It is a solution partner to many sectors with the advantages it provides to its users.



- Transfer of large masses after shredding
- Material durability with the feed screw
- Favorable for the transfer of high density products

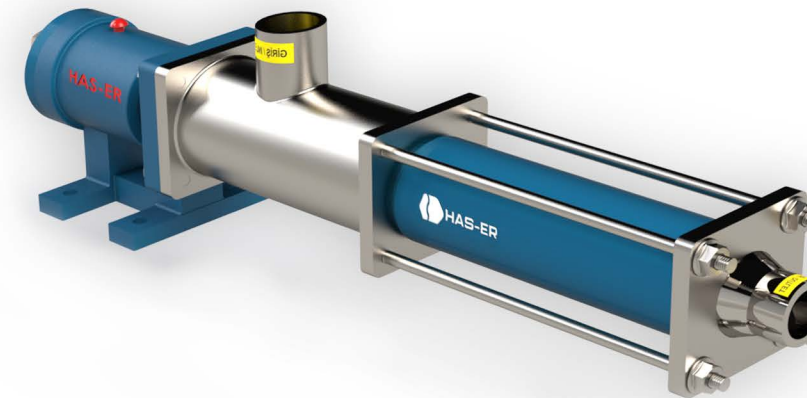
- High performance Maximum 20 m³ / h and 18 BAR model range
- Product storage with range hood
- Shredding large pieces thanks to the mixer blades.



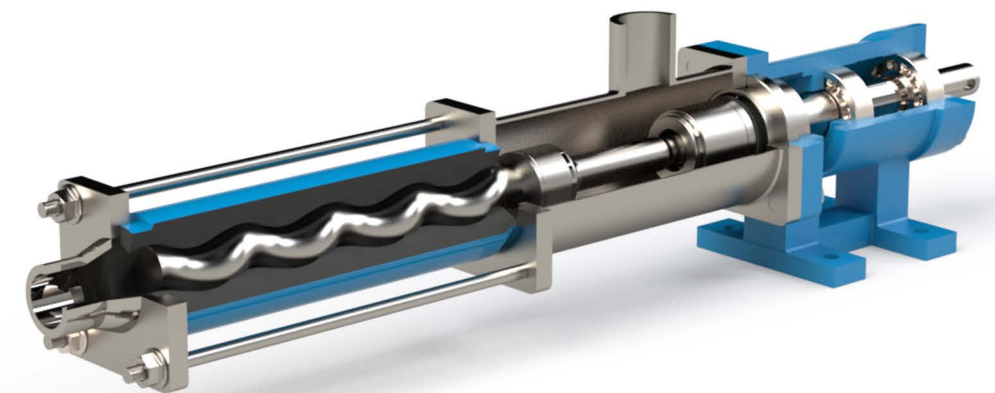
MN-SERIES

- **These pumps, which have a sleeve inlet,** are mainly used in food and industrial areas, and are preferred where vacuum is required for fluid and semi-fluid products.

It has a robust, durable and very ergonomic design, it is preferred for low capacity and dosing purposes, it is a solution partner for many sectors with the advantages it provides to users.



- Suction Max 4 meters
- High performance Maximum 4 m³ / h and 24 BAR model range
- High pressure resistance thanks to the muff connection



Spares

Barrel Pump



- It is used for easy transfer of low and high viscosity fluids from barrels, tanks, containers, etc.

• The speed control device on the engine, the desired level of flow and volume control can be provided. (Max. 50Hz / Min. 20Hz)

• It is easy to use and easy to carry owing to bracket on the engine.

• Owing to AISI 316L / AISI 304L quality stainless steel models selected according to fluid type, the pump is hygienic and long-lasting.

• It works with selected mono pump principle depending on viscosity.

• There are pump alternatives suitable for 0 – 1,000 cps, 1,000 – 20,000 cps, 20,000 – 100,000 cps viscosity ranges.



All of the parts in our pumps are produced by our firm. You can take spares on the same day from our firm having high stock of spares.

- With the label coding and serial numbers on our pumps, your orders will be accurate and safe. We recommend you keep the label information on the pump.



ROTOR



STATOR



BODY SHAFT



SHAFT



PACKING



REPAIR SET



BELLOWS TIRE



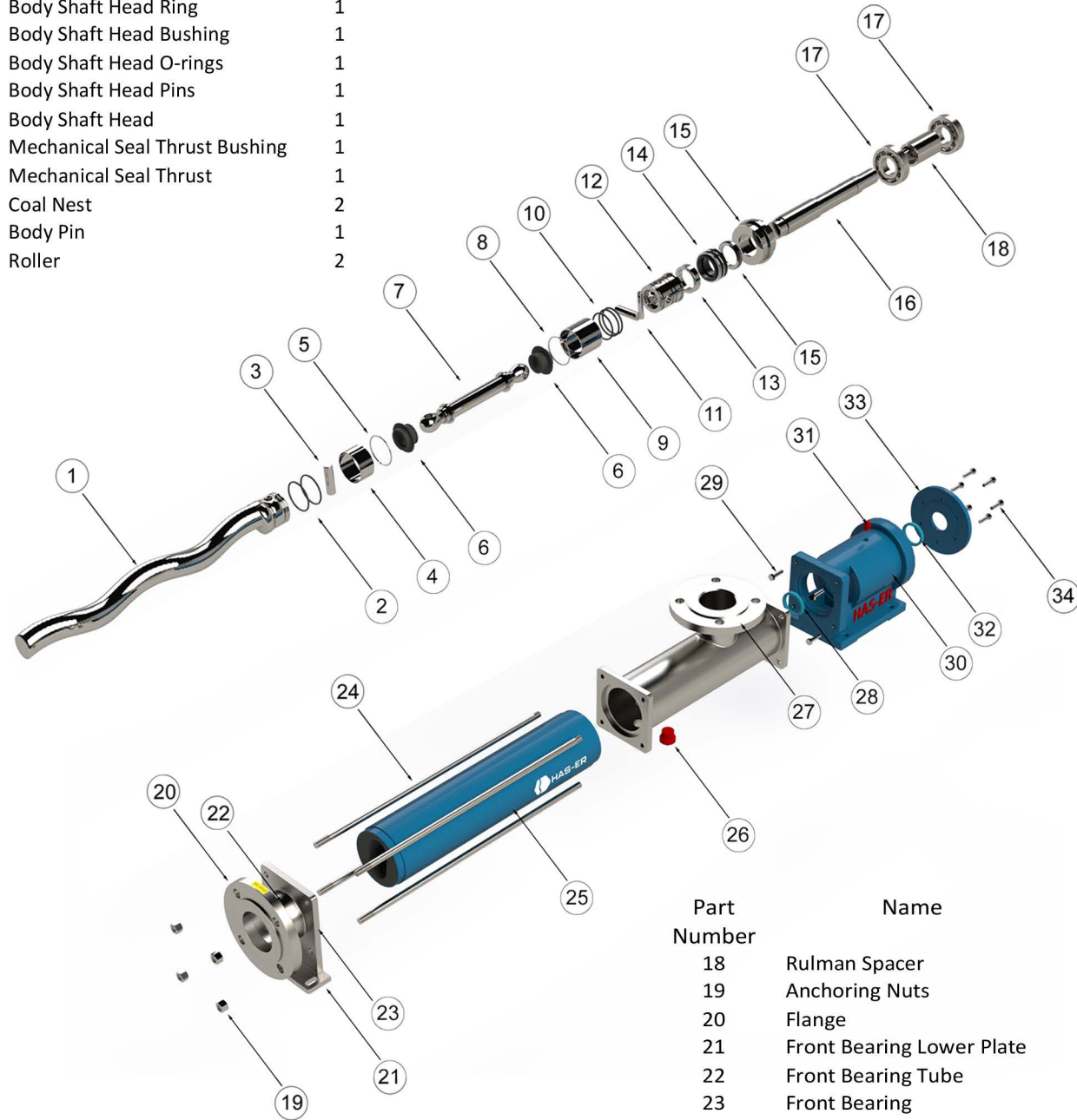
DUST SEAL



CONNECTION HEAD



Part Number	Name	QTY
1	Rotor	1
2	Rotor Head O-ring	1
3	Rotor – Shaft Connecting Pin	1
4	Rotor Head Spacer	1
5	Rotor Head Ring	1
6	Shaft Bellows	1
7	Shaft	1
8	Body Shaft Head Ring	1
9	Body Shaft Head Bushing	1
10	Body Shaft Head O-rings	1
11	Body Shaft Head Pins	1
12	Body Shaft Head	1
13	Mechanical Seal Thrust Bushing	1
14	Mechanical Seal Thrust	1
15	Coal Nest	2
16	Body Pin	1
17	Roller	2



Part Number	Name	QTY
18	Rulman Spacer	1
19	Anchoring Nuts	1
20	Flange	1
21	Front Bearing Lower Plate	1
22	Front Bearing Tube	1
23	Front Bearing	1
24	Anchoring	1
25	Stator	1
26	Blind Cap	1
27	Chamber	1
28	Seal	1
29	Connection Bolts	1
30	Body	1
31	Fitting	1
32	Shutter Seal	1
33	Body Shutter	1
34	Body Shutter Bolt	1

